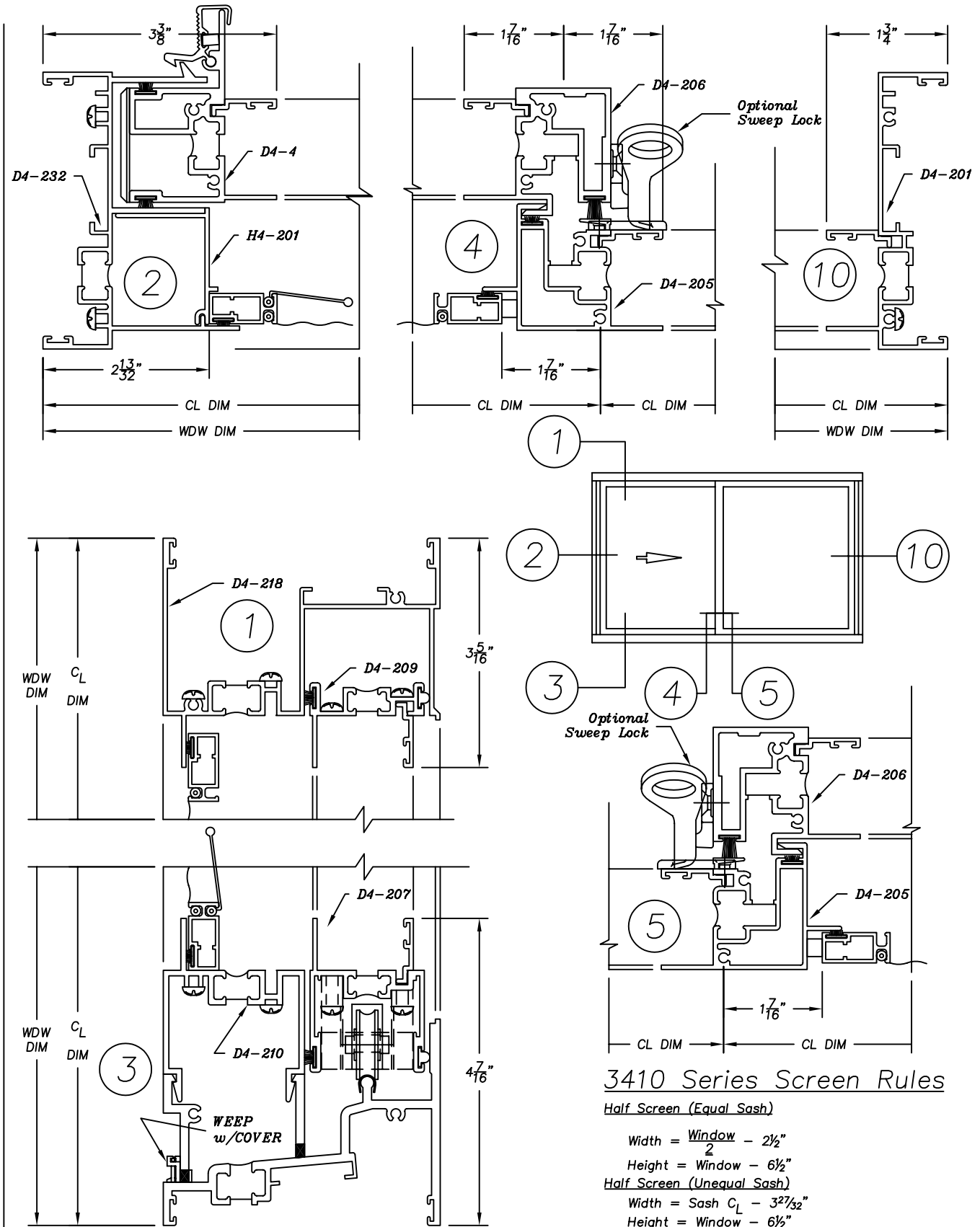


3410 Series

4" Heavy Commercial
Thermally Improved Single Slider



3410 Series Screen Rules

Half Screen (Equal Sash)

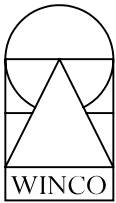
$$\text{Width} = \frac{\text{Window}}{2} - 2\frac{1}{2}"$$

$$\text{Height} = \text{Window} - 6\frac{1}{2}"$$

Half Screen (Unequal Sash)

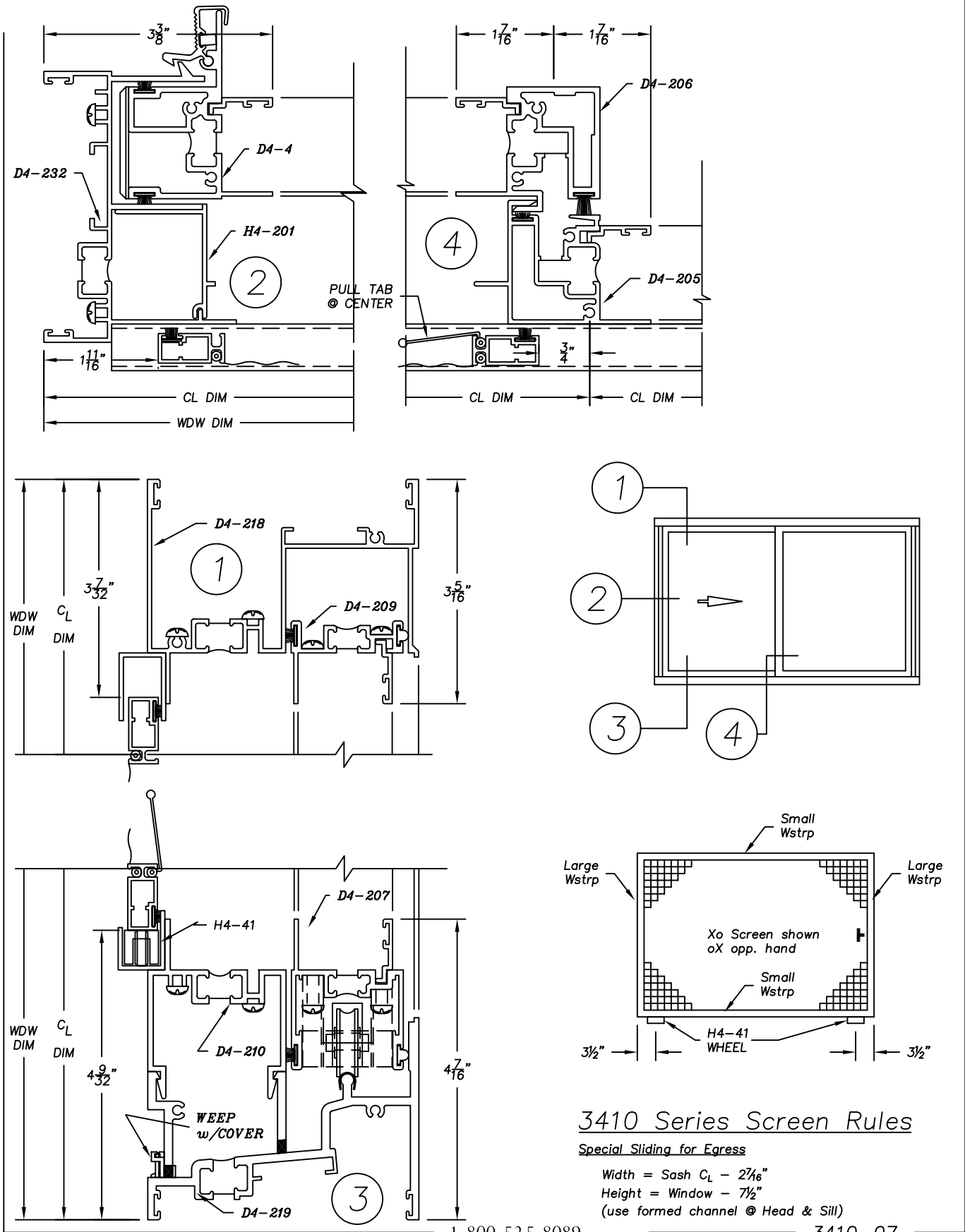
$$\text{Width} = \text{Sash } C_L - 3\frac{27}{32}"$$

$$\text{Height} = \text{Window} - 6\frac{1}{2}"$$



3410 Series

4" Heavy Commercial
Thermally Improved Single Slider



3410 Series Screen Rules

Special Sliding for Egress

Width = Sash CL - 2 7/16"

Height = Window - 7 1/2"

(use formed channel @ Head & Sill)