



# Series 1450 Hung Replica

4" Architectural Grade Thermal Window System  
Fixed - Projected - Casement



## Product Overview

The look of a double-hung window with the energy performance and configuration of a fixed, projected, or casement window is what you get with the 1450 Hung Replica Window. Its deep 4" frame with 1/8" wall thickness easily and efficiently fills large openings and spans deep wall cavities.

Glazing options include blast and impact resistant, as well as built-in shades. The 1450 Hung Replica Window offers a full line of trim and accessories to meet all historic sightline requirements of original windows.

Green Commitment

Energy Savings

Noise Control

Blast Shield

Historic Replication

Wind Protection

## Features & Custom Options

- Azon "Azo-Brader" thermally broken frame and sash, backed by a 10 year warranty against thermal break shrinkage
- Fully mitered overlap sash configuration with fully sealed corners and dual weather-stripping
- Various glazing thicknesses available
- Dual and triple glazing with optional integral blinds providing dynamic light control
- Wide variety of locking and operating hardware available
- Accessory line of receptors, mullions, panning and trim for a customized look
- Optional aluminum extruded screens
- Blast, ballistic and impact glazing available
- Optional aluminum extruded screens

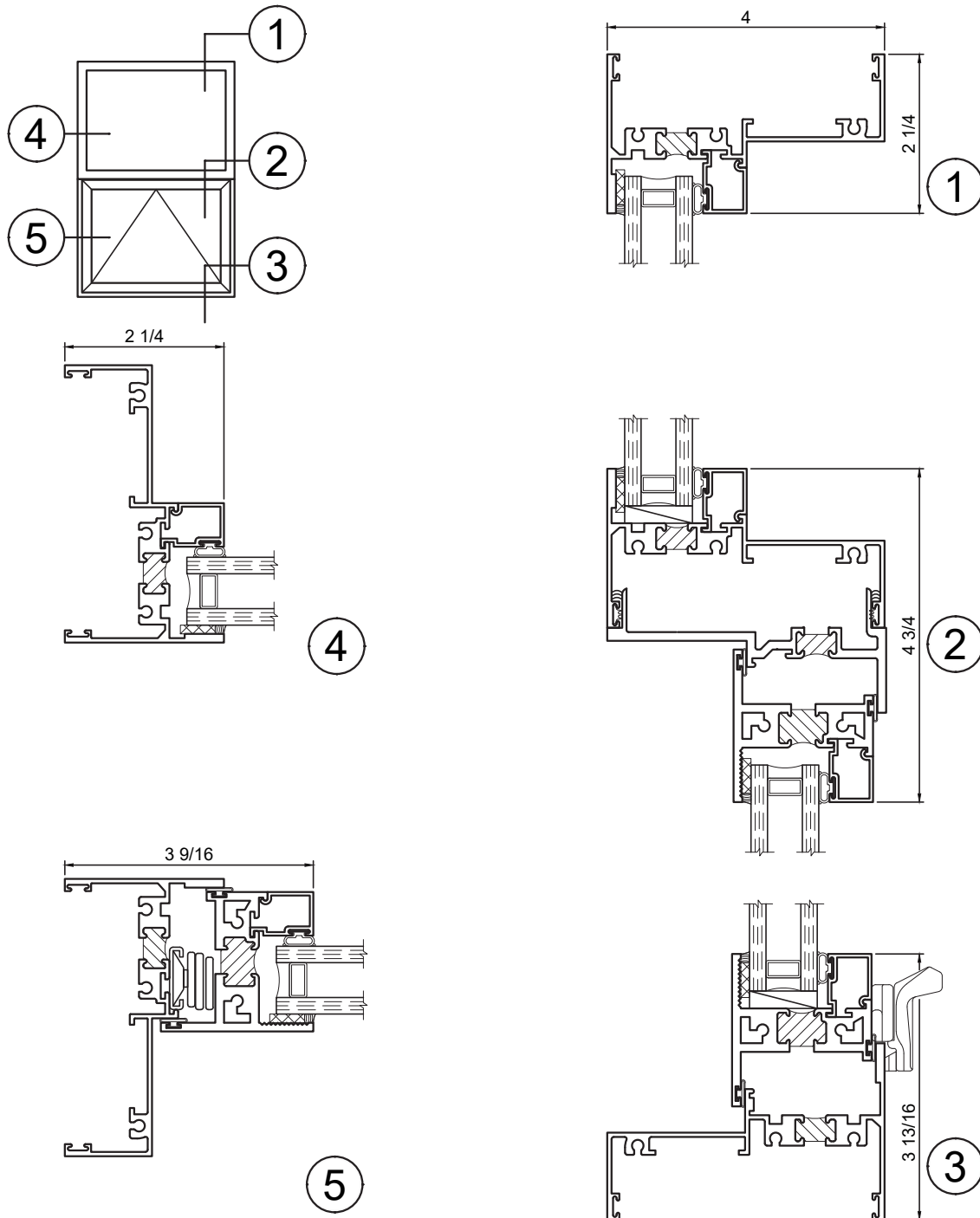
## Performance Data\*

Type	Air (CFM/FT <sup>2</sup> @ 6.24 PSF)	Water (PSF)	Structural (PSF)	CRF	U-Value (Btu/Hr-Ft <sup>2</sup> -°F)	STC
Fixed AW Grade AW-100	Less than 0.10	12 (Higher levels may be available upon request)	+/- 150	65*	0.29*	Contact your local Rep
Projected AW Grade AP-AW100	Less than 0.10	12 (Higher levels may be available upon request)	+/- 150	60*	0.43*	

\*U-Value, CRF, Water and AW ratings are based on a particular type of glazing and window configuration being used. They are provided for comparison purposes only. They are based on products of standard configuration, tested in accordance with NFRC/FGIA/AAMA specifications, in a laboratory environment under optimum conditions. Performance values will vary according to project specifications, installation, size, configuration, hardware, glass, etc. Any required field testing should be done in accordance with the project specifications and FGIA/AAMA field testing protocol, not this data.



# Series 1450 Hung Replica Detail Drawings



Winco Window Company  
6200 Maple Avenue  
St Louis, MO 63130

TESTING: Our products meet stringent testing requirements of both the American Architectural Manufacturers Association (AAMA) and the National Fenestration Rating Council (NFRC) standards and certification.

VER:110625

